



HIRSCHMANN

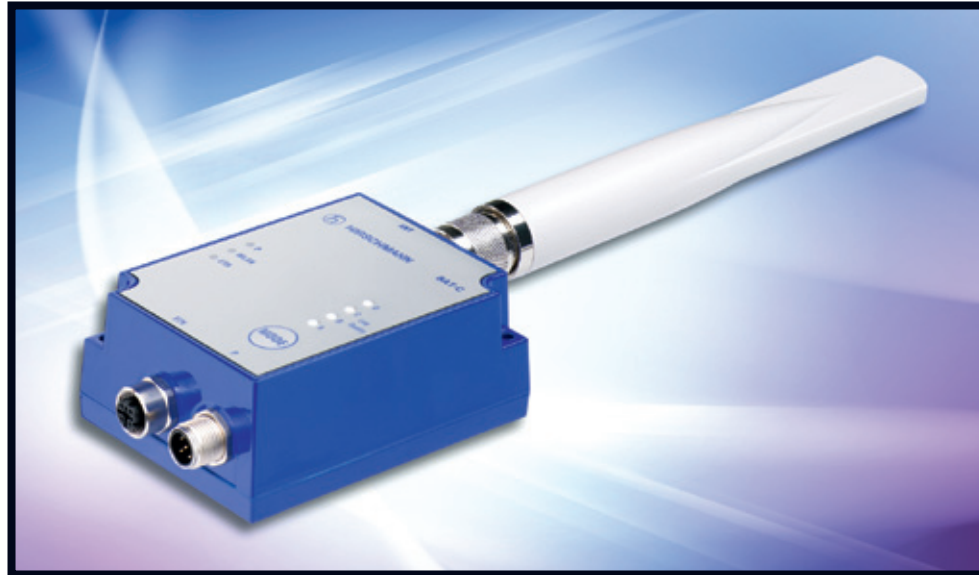
A **BELDEN** BRAND

New Product Bulletin

NP 1039HE

Hirschmann™ BAT-C

A highly compact and cost effective WLAN Client designed for industrial applications



New Hirschmann™ BAT-C WLAN Client Delivers the Best Low-cost Solution in Industrial Environments Where Space is at a Premium.

- BAT-C is extremely cost-effective as it only offers those features requested by a typical industrial WLAN application.
- Thanks to its compact dimensions, BAT-C client helps you save valuable space.

The Hirschmann™ BAT-C WLAN Client is a simple and a highly compact client. As it was developed specifically for industrial projects and installations that require a large number of low feature clients, the feature set has been reduced to an absolute minimum. The BAT-C client is small enough for use in applications where space is at a premium.

Applications

The low featured Hirschmann™ BAT-C WLAN Client is particularly suited for System integrators and OEM manufacturers who wish to integrate the client into their specific industrial end solution. Key examples include installations in warehouses and/or production environments with low requirements for authentication and networking features.

In wireless mobile applications, using the BAT-C makes it possible to introduce wireless and all the inherent benefits.

In a warehouse, the BAT-C can be mounted into all drawers, so they can be moved and controlled in the most sophisticated way, with a wireless network link. Thanks to the client's compact format, storage space can be kept to a maximum.

The BAT-C Client is also highly suited for transportation applications – as they can be mounted into cars and vehicles and/or public transport applications. Thanks to its compact dimensions, BAT-C can be placed into the roof structure of buses. This facilitates the use of WLAN for fast transmission of videos, ticketing data or customer information.

Customer Benefits

The key benefits of the BAT-C client include its low cost – thanks to the reduced feature set. You only pay for the client function, without having to purchase a range of features that you do not require. Another important benefit is its compact size. The BAT-C can be placed in extremely small spaces, leaving plenty of room for other devices, without interfering with them.

**A new product to
serve your needs.
Be certain.**



Hirschmann™ BAT-C WLAN Client delivers a wireless solution that is both practical and cost effective.

Hirschmann™ BAT-C

The Hirschmann™ BAT-C WLAN Client comes complete with the following interfaces:

- WLAN according to 802.11n, one antenna connector (max. 150 Mbps)
- Power supply 24 V
- Integrated web interface for basic configurations
- Max. security level is WPA2/PSK
- Fast roaming support

The client was designed for industrial use and is able to operate within an extended temperature range. Its IP67 housing and 24 V power supply make it suitable for most industrial environments and can be used together with Belden cables; switches; routers; and connectors.

The Belden® Competence Center provides consulting, training, and support for these products.



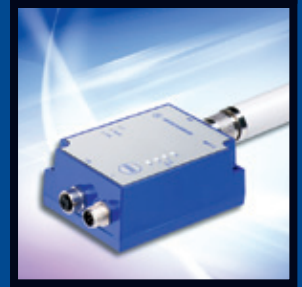
BAT-C is certified for vehicles and provides reliable and simple WLAN connectivity.



BAT-C is small and can be mounted in tight spaces.

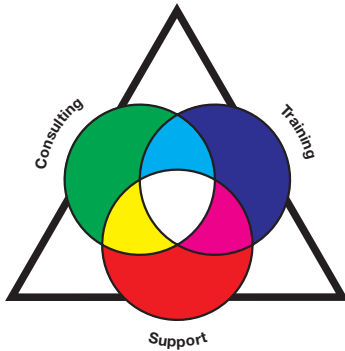


BAT-C is rugged and small and can be used for automating the operation of different installations e.g warehouses.



Technical Information

Product Description	
Type	BAT-C
Description	Industrial Wireless LAN Client for 2.4 GHz and 5 GHz operation
Port Type and Quantity	1x 802.11n/a/b/g/h/i; 1x 24 V DC; 1x 100 Mbps Ethernet (M12)
Order-No.	942 072-001
Radio Technology	
Antenna Connector	N-Type female
Range	Depending on type of used external antenna. Typical 30 m indoors, up to 10 km outdoors.
Frequency Band	2.4 GHz and 5 GHz
Modulation	OFDM, DSSS
Radio Topology	Wireless LAN Client
Power Requirements	
Operating Voltage	9 – 30 V
Current Consumption at 24 V DC	max. 81 mA
Ambient Conditions	
Operation Temperature	-40°C to +70°C
Storage/Transport Temperature	-40°C to +85°C
Relative Humidity (non-condensing)	5 – 90%
Mechanical Construction	
Dimensions (LxWxH)	approx. 11 cm x 6 cm x 5 cm
Mounting	Wall or Table mounting
Protection Class	IP67
Approvals	
Safety of Information Technology Equipment	EN 60950-1:2006 and/or IEC 60950-1:2005 (2nd Edition)
Radio	R&TTE (Europe), FCC/CFR 47 part 15; IC (Industrie Canada)
Environmental	R&TTE Directive 1999/5/EC <ul style="list-style-type: none"> • EN 300 328 V1.7.1 (2006-10), EN 301 893 V1.5.1 • EMC: EN 301 489-1 V1.8.1 (2008-04), EN 301 489-17 V2.1.1 (2009-05), EN 61000-6-2 (2005)
For Use in Vehicles and Cars	E1/e1
Scope of Delivery and Accessories	
Scope of Delivery	Device, dualband dipole omnidirectional antenna
Accessories to Order Separately	External Antennas out of the BAT-ANT portfolio



The Belden® Competence Center

As the complexity of communication and connectivity solutions has increased, so have the requirements for design, implementation and maintenance of these solutions. For users, acquiring and verifying the latest expert knowledge play a decisive role in this. As a reliable partner for end-to-end solutions, Belden offers expert consulting, design, technical support, as well as technology and product training courses from a single source: Belden Competence Center. In addition, we offer you the right qualification for every area of expertise through the world's first certification program for industrial networks. Up-to-date manufacturer's expertise, an international service network and access to external specialists guarantee you the best possible support for products from Belden®, Hirschmann™ and Lumberg Automation™. Irrespective of the technology you use, you can rely on our full support – from the implementation to the optimization of every aspect of daily operations.

Always Stay Ahead with Belden

In a highly competitive environment, it is crucial to have reliable partners who are able to add value to your business. When it comes to signal transmissions, Belden is the number one solutions provider. We understand your business and want to know your specific challenges and targets to see how effective signal transmission solutions can push you ahead of the competition. By combining the strengths of our three leading brands, Belden®, Hirschmann™; and Lumberg Automation™, we are able to offer the solution you need. Today it may be a single cable, a switch or a connector, thus solving a specific issue; tomorrow it can be a complex range of integrated applications, systems and solutions.

We guarantee the superior performance of your mission-critical systems, even in the most demanding circumstances. If signal transmission is vital to your business, get in touch with the partner that delivers. Be certain. Belden.